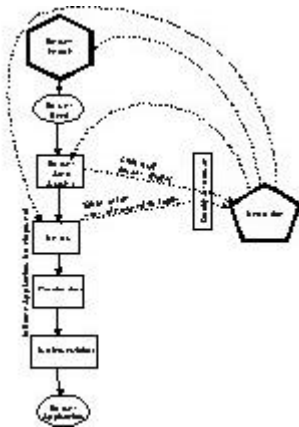


Proactive Maintenance of the Repository

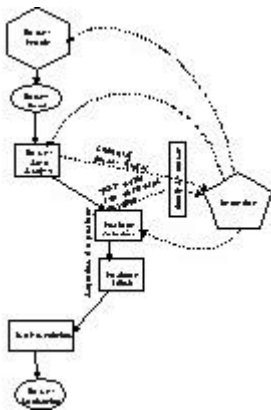
Whereas the maintenance of the repository which is driven by System Development Life Cycles (i.e. The acquisition of new systems as shown in the next three diagrams) usually has to take priority, there is a need for a continuous background activity, which captures pre-existing database information (legacy systems) and includes it, with its mappings, in the repository.

This activity is best packaged into discrete projects. Each project would use its own workbench in a manner similar to the use made during development of new systems. I.e. The usual change control procedures would be followed.

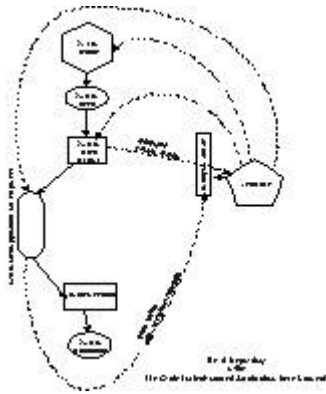
Life Cycle driven Use and Maintenance of the Repository: In-House Application Development



Life Cycle driven Use and Maintenance of the Repository: Acquisition of a Package



Life Cycle driven Use and Maintenance of the Repository: Outsourced Application Development



Life Cycle driven Use and Maintenance of the Repository: All Cycles

